

## USER GUIDE

### Scorpion 2 Plate Fiber Patch Panel

#### Wall Mount, Small Footprint, Splicing and Patching up to 48 Fibers

The RLH Scorpion 2 Plate Fiber Patch Panel is designed for fiber optic patching and splicing applications where wall or back board space is at a premium. It is designed to fit into small enclosures, the small footprint and door design allow the patch panel to be opened & closed without taking up additional backboard room for clearance.

The fiber patch panel has a large wrap around door for easy access, which is secured with flip latches. A built-in padlock hasp provides additional security if desired. It comes standard with fiber management spools, fiber splice trays with splice protection sleeves, distribution chart, cable mounting tiedowns, and Velcro® straps for securing splice trays and fiber cable. Self-sealing removable 1-1/4" grommets on the top and bottom of the enclosure, together with fiber strength member clamps, allow for safe entrance and exit of fiber optic cable. Wall mounting hardware is also included.

Adapter plates may be ordered separately or preinstalled and are available with ST, SC, FC, LC, MTRJ, UPC and APC style adapters. When ordered using our configuration matrix, the Adapter Plates and Splice on Fiber Pigtails are preinstalled for convenience. This patch panel was designed and is made in the USA.

### Key Features

- Holds 2 LGX® adapter plates, blank adapter plates included
- Ready to patch or splice, splice trays and sleeves included
- Small Footprint, Fully encloses distribution fiber
- Self-sealing removable grommets (up to 1-1/4") on the top and bottom
- Hinged door with flip latches
- Includes 2 strain relief clamps for securing entry cable
- Adapter plates may be removed with fibers attached
- Includes hook and loop straps for easy and flexible fiber management
- Durable powder coated steel construction
- Multiple built in anchor points to secure fiber cable inside
- Holds ST, SC, FC, LC, MTRJ, UPC, APC style adapters
- Wall mounting hardware included
- Made in USA



Scorpion 2 Plate Fiber Patch Panel



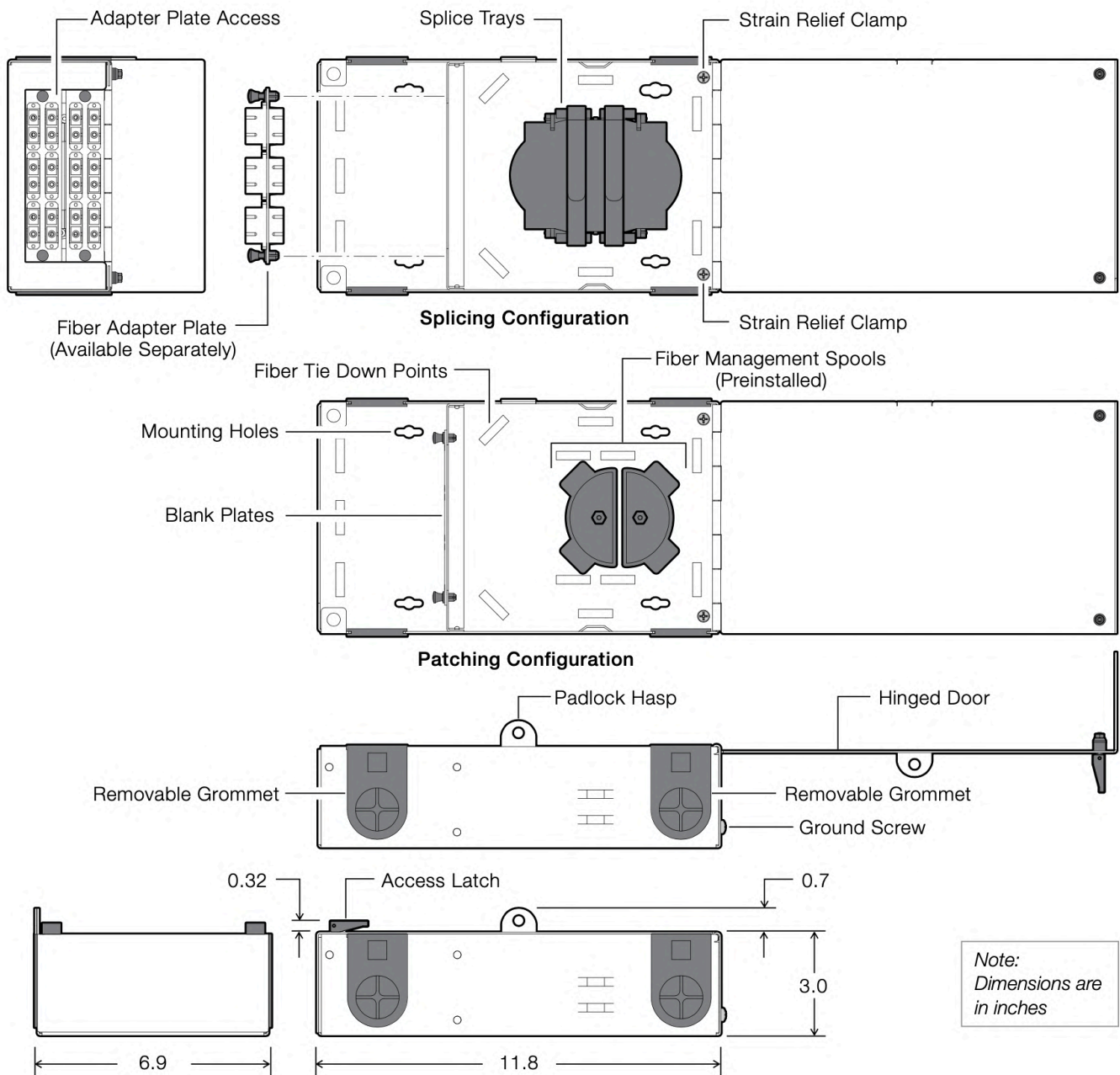
Accessory Kit



## USER GUIDE

### Dimensions & Components

The dimensional diagram below calls out important features of the Wall Mount Patch Panel.



## Installation

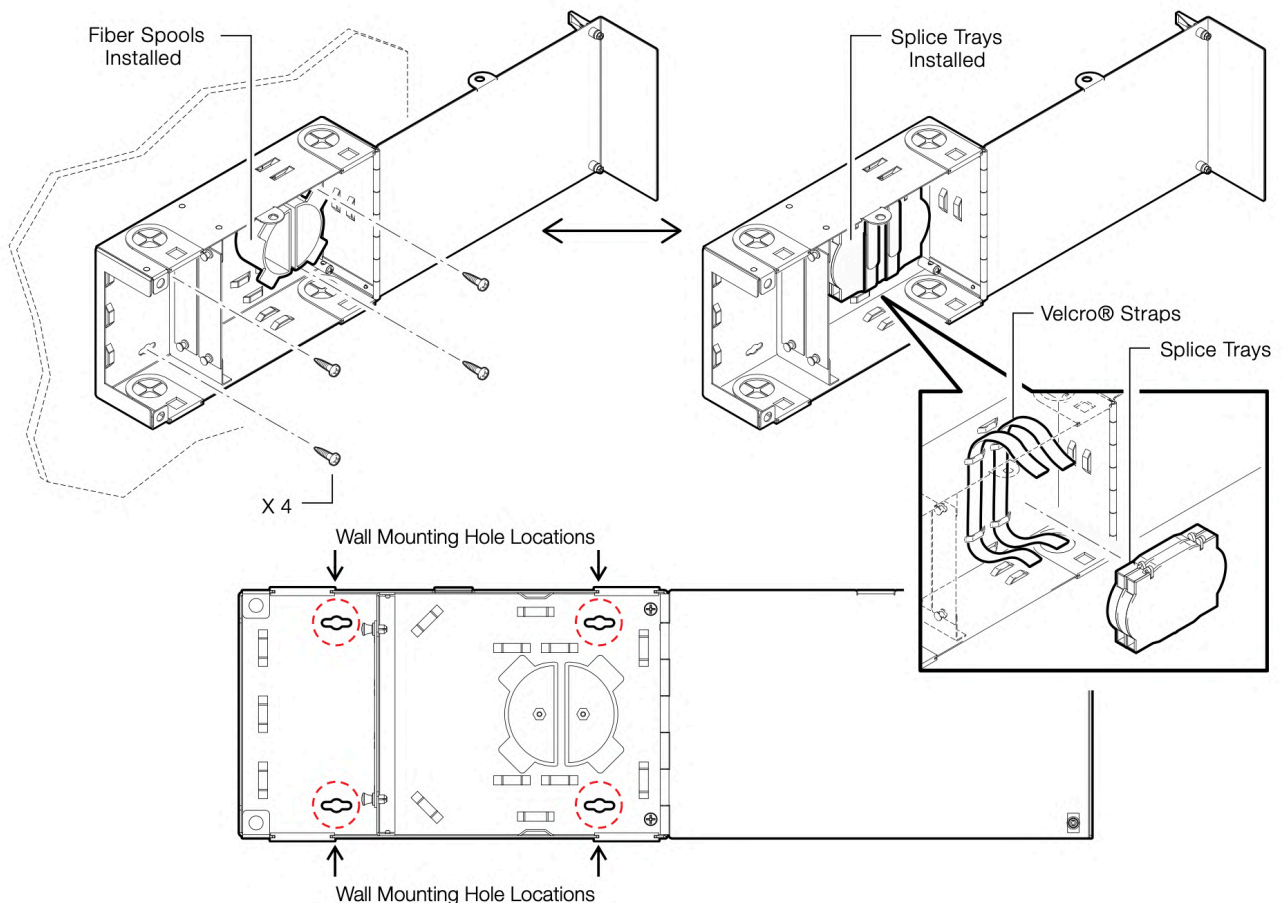
Choose a suitable location, with room for the door to open fully for easy access to the interior. Pre-position the patch panel to plan out cable routings and check for any potential problems with the location. The patch panel may be mounted in any orientation making it a flexible solution in the field.

### Before Installing

Fiber management spools are preinstalled for accommodating fiber cable when used as a patching solution. When a splicing configuration is desired, remove the fiber management spools by loosening the attaching hardware before mounting. Once the spools are removed, the patch panel may be wall mounted. Secure the splice trays in position with the two (2) Velcro straps included in the accessory kit once splicing is completed.

### Wall Mounting

Once the position is determined, mark out the mounting points and use the included 3/4" screws to mount the patch panel. For all other mounting applications, use appropriate mounting hardware as required.



### USER GUIDE

### Ordering Information

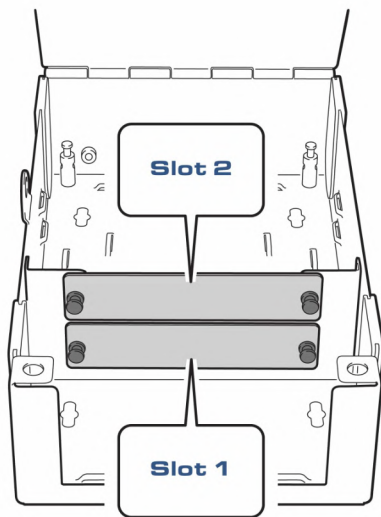
Use the following part number when ordering the patch panel without fiber adapter plates or pigtails.

Description	Capacity	Dimensions	Part Number
2 Plate Wall Mount Patch Panel	2 Fiber Adapter Plates	11.8" (W) x 3.7" (D) x 6.9" (H)	SCORP2-1

- Fiber Adapter Plates and fiber cable pigtails are ordered separately and may be preinstalled prior to shipping

### Ordering with Fiber Adapter Plates and Pigtails

Use the ordering code below to order the patch panel with fiber adapter plates and/or pigtails preinstalled. Refer to the Fiber Adapter Plate Chart and the Fiber Pigtail Chart on the following pages.



Example #1:	<b>S2 - 32 - 32 - 41 - 41 - 1</b>	
Slot 1 (32):		AP-SC6-LDSM-G
Slot 2 (32):		AP-SC6-LDSM-G
Slot 1 (41):		RLH-12SMSC-03M
Slot 2 (41):		RLH-12SMSC-03M
Example #2:	<b>S2 - 08 - 08 - 00 - 00 - 1</b>	
Slot 1 (08):		AP-ST12-LSMM-G
Slot 2 (08):		AP-ST12-LSMM-G
Slot 1 (00):		None
Slot 2 (00):		None

S2 - XX - XX - XX - XX - 1

Slot 1   Slot 2   Slot 1   Slot 2

#### Fiber Adapter Plates

Use the code from the Adapter Plate Chart\* to populate slots with adapter plates

**– Splice Tray & Sleeves  
Included with Patch Panel –**

#### Fiber Pigtails

Use the code from the Fiber Pigtail Chart\* to have them preinstalled into adapter plates

\*Please refer to the **Fiber Adapter Plate Chart** and the **Fiber Pigtail Chart** on the following pages.

**Ordering Information (cont'd)**

**Adapter Plate Chart**

Use the Adapter Code to specify the desired plate style to be preinstalled.

Adapter	Mode	Adapter Plate Style				Supported Fiber Types	Grey Plate Part Number	Adapter Code
		Type	Fibers	Positions	Color			
<b>Blank</b>	-	-	-	-	-	-	<b>AP-BLANK-G</b>	<b>00</b>
<b>ST</b>	<b>SM</b>	Simplex	6	6	Yellow Caps	OS1/OS2	<b>AP-ST6-LSSM-G</b>	<b>01</b>
			12	12	Yellow Caps	OS1/OS2	<b>AP-ST12-LSSM-G</b>	<b>03</b>
	<b>MM</b>	Simplex	6	6	Black Caps	OM1~OM4	<b>AP-ST6-LSMM-G</b>	<b>06</b>
			12	12	Black Caps	OM1~OM4	<b>AP-ST12-LSMM-G</b>	<b>08</b>
<b>FC</b>	<b>SM</b>	Simplex	6	6	Yellow Caps	OS1/OS2	<b>AP-FC6-LSSM-G</b>	<b>20</b>
	<b>MM</b>	Simplex	6	6	Black Caps	OM1/OM2	<b>AP-FC6-LSMM-G</b>	<b>23</b>
<b>FC/APC</b>	<b>SM</b>	Simplex	6	6	Green Caps	OS1/OS2	<b>AP-FA6-LSSM-G</b>	<b>26</b>
<b>SC</b>	<b>SM</b>	Simplex	6	6	■ blue	OS1/OS2	<b>AP-SC6-LSSM-G</b>	<b>30</b>
		Duplex	12	6	■ blue	OS1/OS2	<b>AP-SC6-LDSM-G</b>	<b>32</b>
	<b>MM</b>	Simplex	6	6	■ beige	OM1/OM2	<b>AP-SC6-LSMM-G</b>	<b>33</b>
		Duplex	12	6	■ beige	OM1/OM2	<b>AP-SC6-LDMM-G</b>	<b>35</b>
<b>SC/APC</b>	<b>SM</b>	Simplex	6	6	■ green	OS1/OS2	<b>AP-SA6-LSSM-G</b>	<b>36</b>
		Duplex	12	6	■ green	OS1/OS2	<b>AP-SA6-LDSM-G</b>	<b>38</b>
<b>SC 10G</b>	<b>MM</b>	Simplex	6	6	■ aqua	OM3/OM4	<b>AP-SC6-LSMX-G</b>	<b>39</b>
		Duplex	12	12	■ aqua	OM3/OM4	<b>AP-SC6-LDMX-G</b>	<b>41</b>
<b>LC</b>	<b>SM</b>	Duplex	6	3	■ blue	OS1/OS2	<b>AP-LC3-LDSM-G</b>	<b>51</b>
			12	6	■ blue	OS1/OS2	<b>AP-LC6-LDSM-G</b>	<b>52</b>
			24	6	■ blue	OS1/OS2	<b>AP-LC6-LQSM-G</b>	<b>54</b>
	<b>MM</b>	Duplex	6	3	■ beige	OM1/OM2	<b>AP-LC3-LDMM-G</b>	<b>56</b>
			12	6	■ beige	OM1/OM2	<b>AP-LC6-LDMM-G</b>	<b>57</b>
			24	6	■ beige	OM1/OM2	<b>AP-LC6-LQMM-G</b>	<b>59</b>
<b>LC/APC</b>	<b>SM</b>	Duplex	6	3	■ green	OS1/OS2	<b>AP-LA3-LDSM-G</b>	<b>61</b>
			12	6	■ green	OS1/OS2	<b>AP-LA6-LDSM-G</b>	<b>62</b>
			24	6	■ green	OS1/OS2	<b>AP-LA6-LQSM-G</b>	<b>64</b>
<b>LC 10 GIG</b>	<b>MM</b>	Duplex	6	3	■ aqua	OM3/OM4	<b>AP-LC3-LDMX-G</b>	<b>66</b>
			12	6	■ aqua	OM3/OM4	<b>AP-LC6-LDMX-G</b>	<b>67</b>
			24	6	■ aqua	OM3/OM4	<b>AP-LC6-LQMX-G</b>	<b>69</b>
<b>CAT6 RJ-45</b>	-	Coupler	-	4	-	-	<b>AP-RJCAT6-CP4-G</b>	<b>90</b>
		Punchdown	-	4	-	-	<b>AP-RJCAT6-PD4-G</b>	<b>91</b>

**Ordering Information (cont'd)**

**Fiber Pigtail Chart**

Use the Pigtail Code to specify the desired 900µm Spiral Wrap Splice-on Fiber Pigtail to be preinstalled.

900µm Spiral Wrap Splice-on Pigtail				Part Number	Pigtail Code		
Adapter	Mode	Fibers	Fiber Type				
N/A	N/A	N/A	N/A	NONE	00		
ST	SM	6	OS1/OS2	RLH-06SMST-03M	01		
		12	OS1/OS2	RLH-12SMST-03M	02		
	MM	6		OM1	RLH-06MMST-03M	06	
				OM2	RLH-06M5ST-03M	07	
				OM3	RLH-06MXST-03M	08	
				OM4	RLH-06MCST-03M	09	
		12		OM1	RLH-12MMST-03M	12	
				OM2	RLH-12M5ST-03M	13	
				OM3	RLH-12MXST-03M	14	
				OM4	RLH-12MCST-03M	15	
	FC	SM	6	OS1/OS2	RLH-06SMFC-03M	20	
			12	OS1/OS2	RLH-12SMFC-03M	21	
MM		6		OM1	RLH-06MMFC-03M	23	
				OM2	RLH-06M5FC-03M	24	
				OM3	RLH-06MXFC-03M	25	
				OM4	RLH-06MCFC-03M	26	
		12		OM1	RLH-12MMFC-03M	28	
				OM2	RLH-12M5FC-03M	29	
				OM3	RLH-12MXFC-03M	30	
				OM4	RLH-12MCFC-03M	31	
FC/APC		SM	6	OS1/OS2	RLH-06SMFA-03M	33	
			12	OS1/OS2	RLH-12SMFA-03M	34	
SC	SM	6	OS1/OS2	RLH-06SMSC-03M	40		
		12	OS1/OS2	RLH-12SMSC-03M	41		
	MM	6		OM1	RLH-06MMSC-03M	43	
				OM2	RLH-06M5SC-03M	44	
				OM3	RLH-06MXSC-03M	45	
				OM4	RLH-06MCSC-03M	46	
		12		OM1	RLH-12MMSC-03M	48	
				OM2	RLH-12M5SC-03M	49	
				OM3	RLH-12MXSC-03M	50	
				OM4	RLH-12MCSC-03M	51	
	SC/APC	SM	6	OS1/OS2	RLH-06SMSA-03M	53	
			12	OS1/OS2	RLH-12SMSA-03M	54	
LC	SM	6	OS1/OS2	RLH-06SMLC-03M	60		
		12	OS1/OS2	RLH-12SMLC-03M	61		
		24	OS1/OS2	RLH-12SMLC-03M (2)	62		
	MM	6		OM1	RLH-06MMLC-03M	63	
				OM2	RLH-06M5LC-03M	64	
				OM3	RLH-06MXLC-03M	65	
				OM4	RLH-06MCLC-03M	66	
			12		OM1	RLH-12MMLC-03M	68
					OM2	RLH-12M5LC-03M	69
				OM3	RLH-12MXLC-03M	70	
		24		OM4	RLH-12MCLC-03M	71	
				OM1	RLH-12MMLC-03M (2)	73	
				OM2	RLH-12M5LC-03M (2)	74	
		LC/APC	SM	6	OS1/OS2	RLH-06SMLA-03M	78
				12	OS1/OS2	RLH-12SMLA-03M	79
	24			OS1/OS2	RLH-12SMLA-03M (2)	80	

## USER GUIDE

[www.fiberopticlink.com](http://www.fiberopticlink.com)

### Key Specifications

<b>Adapter Plates:</b>	Holds 2 LGX® plates Up to 24 Fibers each plate *Ordered Separately
<b>Mounting Style:</b>	Wall or panel mount
<b>Environmental:</b>	Indoor or inside weatherproof enclosure
<b>Construction:</b>	Powder coated steel, hinged door with padlock hasp and flip latches
<b>Accessory Kit:</b>	Qty. 2 – Splice trays, 12 position Qty. 30 – Splice sleeves Qty. 2 – 12" x 1/2" Velcro® straps for securing Splice Trays Qty. 6 – 5" x 1/2" Velcro® straps for securing fiber Qty. 10 – Cable ties Qty. 1 – Distribution chart label, 24 fiber Qty. 4 – #10 x 3/4" Mounting screws and washers
<b>Dimensions:</b>	11.8" (W) x 6.9" (D) x 3.7" (H), (300mm x 175mm x 94mm)

### Contact

By Mail:	Att: Sales RLH Industries, Inc. 936 N. Main St. Orange, CA 92867
By Phone:	Local 714-532-1672 Sales / Service Mon - Fri, 6am - 6pm, PST Toll Free 800-877-1672 866-DO-FIBER
By Email:	info@fiberopticlink.com
By FAX:	714-532-1885

### Tech Support

By Email:	support@fiberopticlink.com
By Phone:	Toll Free 855-754-2497 855-RLH-24X7