

Industrial AC/DC + DC/DC Switching 150 Watt Power Supply

Compact, DIN or Wall mountable, with Universal Input

The 150 Watt industrial switching power supply series features a universal input of 100-240VAC or 120-370VDC. Designed for industrial use and is UL Listed, RoHS and CE compliant and operates over a wide temperature range. Includes a powder coated steel housing that can be DIN or wall mounted.

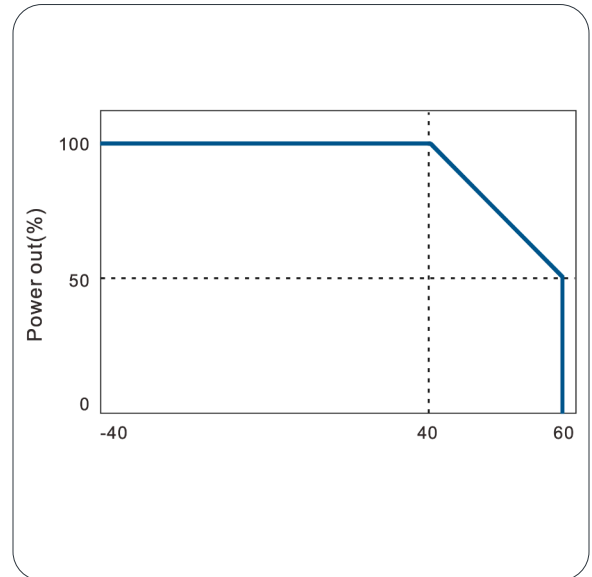
When used in combination with the optional battery charge controllers and battery packs, these power supplies make a compact and reliable UPS system.

Key Features

- Input Range 100-240VAC/120-370VDC
- 24VDC and 48VDC Output models available
- Short circuit, overload, and over voltage protection
- Wide operating temperature range, -40° - 140°F
- Low ripple and noise
- Easily accessible output trim adjustment $\pm 10\%$
- Cooling by free air convection
- Designed for 35mm DIN rail mounting or wall
- LED power indicator
- Convenient screw down terminals
- 100% full load tested



150W Power Supply

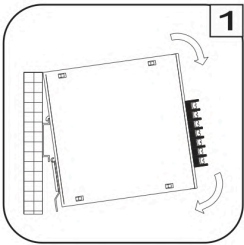


Derating Curve

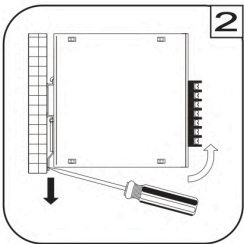
Ordering Information

Description	Part Number
Industrial AC/DC + DC/DC Switching Power Supply, 24 Volts, 6.3 Amps, 150 Watts	AD1150-24F
Industrial AC/DC + DC/DC Switching Power Supply, 48 Volts, 3.2 Amp, 150 Watts	AD1150-48F

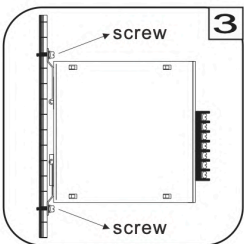
Installation



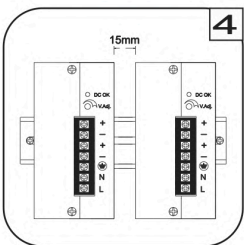
Place the top of the AD1150F rail mount over the top of the DIN rail. Tilt the bottom of the AD1150F toward the DIN rail until it snaps into place.



To remove the AD1150F from the DIN rail, use a flathead screwdriver to pull down the bottom of the rail mount and tilt it away from the DIN rail.



To install AD1150F on wall/plate, loosen the set screw on mounting bracket, fully extend the bracket, then tighten the set screw. Next attach the additional bracket included in the packaging to the opposed side.



The left housing of AD1150F is designed as a heat sink, please keeping a minimum distance of 15mm from each other.

USER GUIDE

www.fiber opticlink.com

Safety Standards



EN 60950

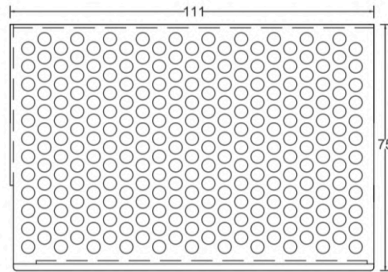


UL 508
CSA 22.2

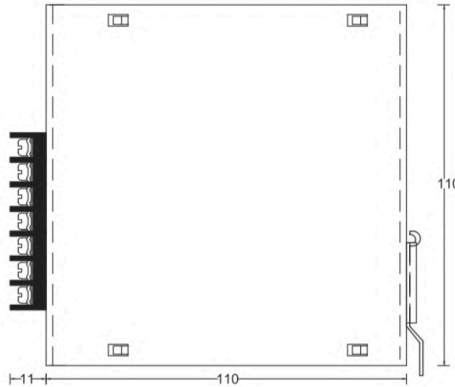
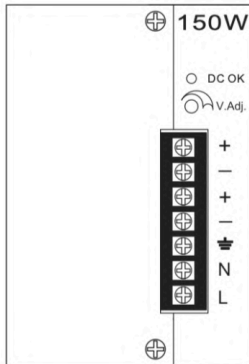
EMC Standards

EN55011	Class B
EN55022	Class B
EN61000-4-2	Level 3
EN61000-4-3	Level 3
EN61000-4-4	Level 3
EN61000-4-5	Level 3
EN61000-4-6	Level 3
EN61000-4-8	Level 3
EN61000-4-11	Level 3

Mechanical Details



Case No.	AD120
Dimensions	121(D)x75(W)x110(H)mm
Case Material	Metal



Terminal Allocation

Designation	Description
DC OK	Green LED Indicator
V Adj.	O/P Voltage adjustment
+	Output Positive
-	Output Negative
⊕	Earth
N	Input Neutral
L	Input Line

USER GUIDE

General Specifications

Switching Frequency:	85kHz
Isolation Voltage:	Input-Output: 3000VAC /4242VDC Input-FG: 1500VAC/2121VDC Output-FG: 500VAC/ 710VDC
Isolation Resistance:	100MΩ when Input-Output @500VDC
Operating Temperature:	-40°C~40°C Full Load, 40°C to 60°C derating curve applies
Derating:	2.5% per degree from 40°C to 60°C
Storage Temperature:	-40°C to +85°C
Relative Humidity:	5%~95% RH, Non-condensing
Temperature Coefficient:	±0.04% of output voltage per °C
MTBF:	60,000hrs Min. Per MIL-HDBK-217F, 25°C GB
Attitude During Operation:	2000m
Installation Position:	Vertical
Vibration:	Random Vibration, 10~500Hz. 3 axis
Warranty:	3 Years

Input Specifications

Input Voltage:	100~240VAC/120~370VDC
Input Frequency:	47~63Hz
Inrush Current: Cold Start:	22A/115VAC 44A/230VAC
Rated Input Current:	3.5A Max., Vi=100~240VAC
Leakage Current:	Input-output 0.25mA, Inout-FG 3.5mA, Vi=250VAC

USER GUIDE

Output Specifications

Output Voltage Accuracy:	±1%
Minimum Load:	0%
Line Regulation:	±1%, measuring from low line to high line rated load
Load Regulation:	±2%, measuring from 20% to 100% of rated load 230VAC input
Voltage Trim Range:	±10%
Rated Continuous Loading:	6.3A@24VDC, 3.2A@48VDC
Hold Up Time:	30mS Min., Full load@230VAC.
Turn On Time:	1300mS
Rise Time:	13mS
Fall Time:	25mS
Transient Response:	Recovery Time: 2mS, Load change 50% to 100% Voltage Deviation: 5%, Load change 50% to 100%
Efficiency:	AD1150-24F: 82% / AD1150-48F: 83%
Ripple and Noise:	AD1048-24FS: 150mVp-p / AD1048-48FS: 250mVp-p (measured by using 0.1μF metallized capacitor and 47μF electrolytic capacitor in parallel at rated load and 230VAC input)

Protection Specifications

Input Fuse:	3.15A/250V
Input Surge Load Protection:	Varistor, IEC6100-4-5
Degree of Protection:	IP20
Short Circuit Protection:	Autorecovery
Over Voltage Protection:	Autorecovery
Rated Over Load Protection:	160~200%
Overload Protection:	Power limited

USER GUIDE**Contact**

By Mail:	Att: Sales RLH Industries, Inc. 936 N. Main St. Orange, CA 92867
----------	---

By Phone: Sales / Service Mon - Fri, 6am - 6pm, PST	Local	714-532-1672
	Toll Free	800-877-1672 866-DO-FIBER

By Email:	info@fiberopticlink.com
-----------	--

By FAX:	714-532-1885
---------	--------------

Tech Support

By Email:	support@fiberopticlink.com
-----------	--

By Phone:	Toll Free	855-754-2497 855-RLH-24X7
-----------	-----------	------------------------------