



## CORE - Communications Outdoor Rack Enclosure 24"x24"x16" - Stainless Steel

CORE-242416S-XXX-XXX-1

### Dual NEMA-4/4X Rainhood vents and fans

The RLH CORE series of outdoor cabinets offer full protection for critical equipment deployed in harsh environments. These enclosures may be configured with factory options to support a wide range of installation requirements and operating conditions.

Stainless CORE enclosures are made from high-grade 304 alloy, providing superior corrosion resistance and long-term durability compared to aluminum alloy. Standard thermal control options include air conditioner or vented exhaust fan.

Each enclosure also features a vented solar shield, gasketed weatherproof door, aluminum back panel, ground bus bar, and pole mount bracket.

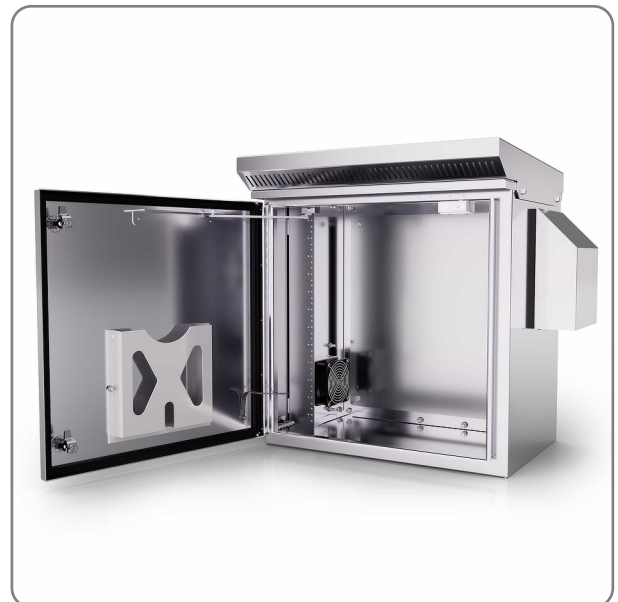
CORE enclosures are designed and manufactured in the USA, and are BABA and BEAD compliant.



CORE with NEMA 4R Vents - External view

### Features

- Weatherproof design for outdoor use
- Heavy duty, precision welded, stainless steel construction
- Dimensions: 24"H x 24"W x 16"D (internal)
- Aluminum back panel
- Quarter turn latches with padlock ring
- Hinged door with alarm switch, limit stop and document pocket
- Removable 12RU 19 inch equipment rack
- Neoprene weather-tight door seal
- Standard NEMA 4R vent fan and thermostat
- Optional 1000 Btu air conditioner
- Pole, wall or strut mountable
- Top solar shield
- Factory configurable options available
- Made in USA



CORE with NEMA 4R Vents - Internal view

### Part Number Matrix

CORE-242416 ■ ■ ■ ■ ■ ■ ■ -1

Code	Enclosure Construction
A	Aluminum Alloy - Powder Coated
S	Stainless Steel

Code	Installed Equipment Rack
F	Fixed 19"/23" Rack
X	None

Code	Temperature Control
A	1000 Btu Air Conditioner
V	NEMA 3R Vents with Fan & Thermostat
H	NEMA 3R Vents with Fan, Thermostat and Heater
U	NEMA 4 Vents with Rainhoods*, Fan and Thermostat
G	NEMA 4 Vents with Rainhoods*, Fan, Thermostat and Heater
X	None

\* NEMA 4 Washdown Rainhood Vents are selected based on cabinet type: Aluminum Alloy cabinets include powdercoated hoods, stainless steel cabinets include stainless steel hoods.

Code	Custom Configuration
X	None

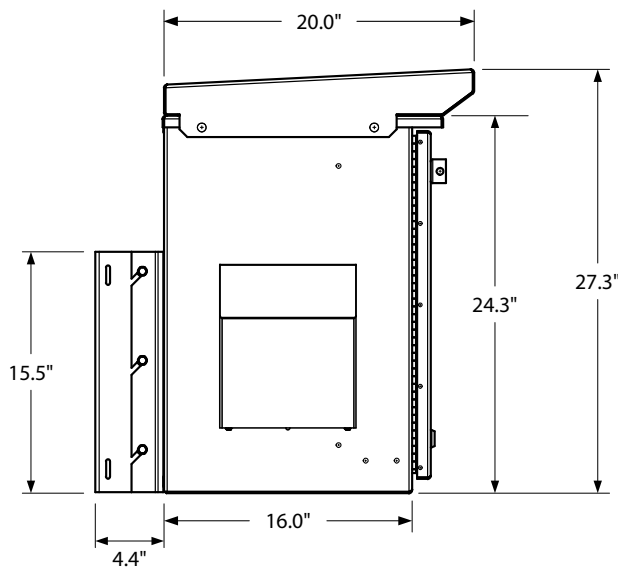
Code	Solar Shield and Pole Mount*
S	Top Solar Shield
P	Pole Mount Bracket
B	Top Solar Shield and Pole Mount Bracket
X	None

Code	Back Panel Style
W	Fire treated 3/4" plywood backboard
A	Aluminum back panel
X	None

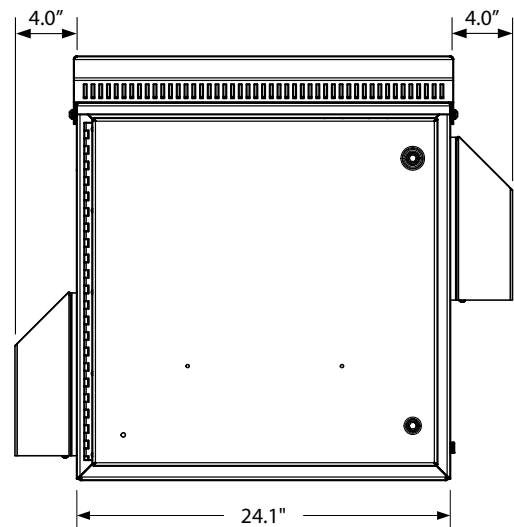
Code	Door Alarm
A	Single Door Alarm Switch
D	Dual Door Alarm Switches
X	None

\* Stainless steel Top Solar Shield and Pole Mount Bracket are supplied on stainless steel enclosures.

### Dimensions



Side View



Front View



## Specifications

<b>Dimensions</b>	24.3" (H) x 24.1" (W) x 16" (D) (618mm x 612mm x 406mm)
<b>Construction</b>	Grade 304 Stainless Steel
<b>Compliance</b>	BABA and BEAD compliant

## Standard Configuration with NEMA 4R Vents

Description	Part Number
Grade 304 Stainless Steel, 12RU Fixed 19" Equipment Rack, NEMA 4R Vents with Fan & Thermostat, Single Door Alarm Switch, Aluminum Back Panel, Solar Shield	<b>CORE-242416S-FUA-ASX-1</b>

## Standard Configuration with Air Conditioner

Description	Part Number
Grade 304 Stainless Steel, 12RU Fixed 19" Equipment Rack, 1000 Btu AC System, Single Door Alarm Switch, Aluminum Back Panel, Solar Shield	<b>CORE-242416S-FAA-ASX-1</b>

## Contact

<b>By Mail:</b>	ATTN: Sales RLH Industries, Inc. 936 N. Main Street Orange, CA 92867	
<b>By Phone:</b>	<b>Local</b>	714-532-1672
<b>Sales/Service</b>	<b>Toll Free</b>	800-877-1672
<b>By Email:</b>	info@fiberopticlink.com	
<b>By Fax:</b>	714-532-1885	

## Support

<b>By Email:</b>	support@fiberopticlink.com
<b>By Phone:</b>	Toll Free 855-754-2497