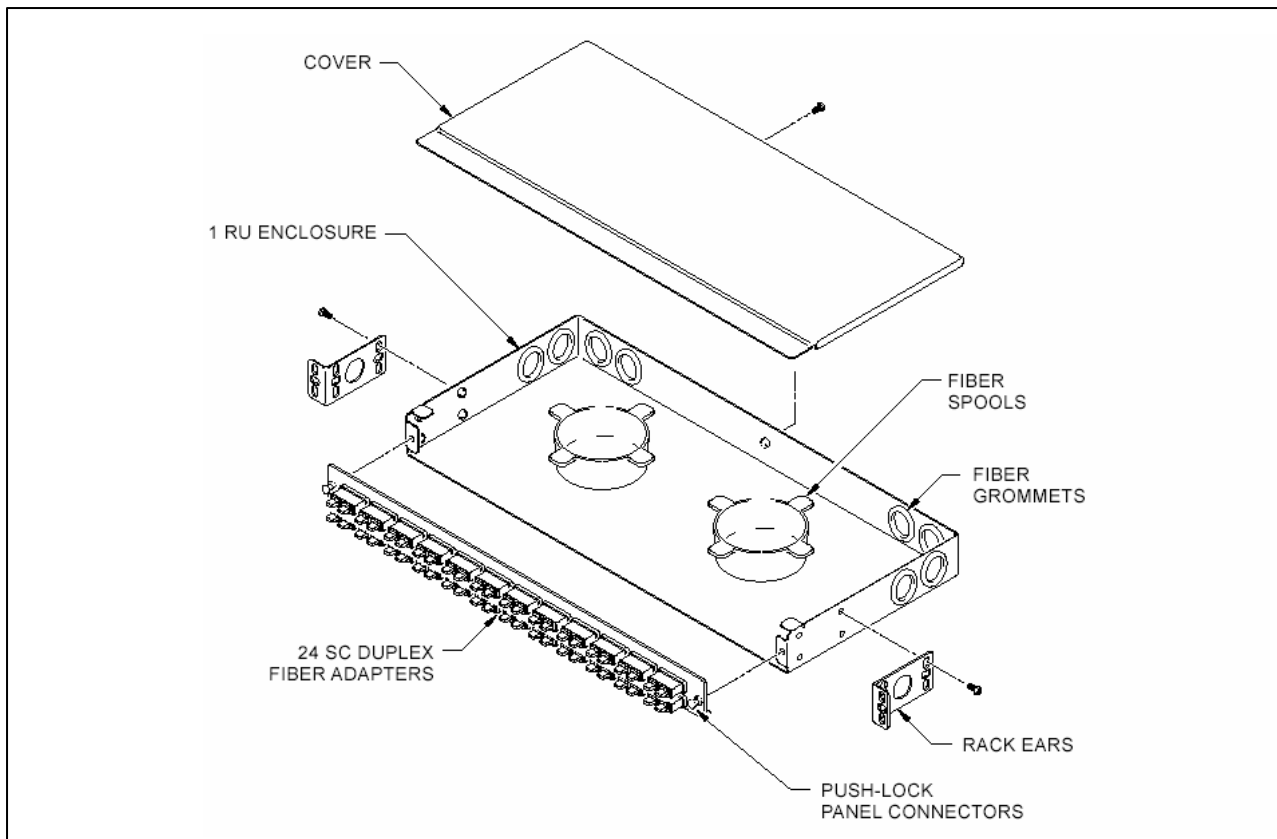
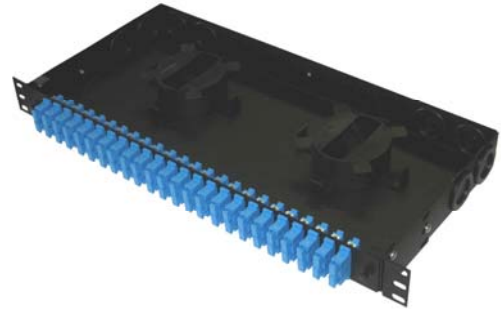


Hi-Density 1RU Rack Mount Fiber Patch Enclosure

The Hi-Density 1RU Rack Mount Patch Panels are used to house fiber terminations and accommodate patching of fiber links. The enclosure can be installed into 19" or 23" racks and is constructed of powder coated steel with removable front connector panel and cover for easy access to fiber optic cables. Self sealing rubber grommets accommodate multiple cable entrances. Cable management hardware is included. Size: 1.75"H x 17"W x 8.0"D



Ordering Info:

| Part Number | Description |
|-----------------|--|
| RLH-24HDRSC-01 | Hi-Density 1RU Patch Panel 24-Port SC-SC SIMPLEX (24 FIBERS) |
| RLH-24HDRDSC-01 | Hi-Density 1RU Patch Panel 24-Port SC-SC DUPLEX (48 FIBERS) |
| RLH-24HDRDLC-01 | Hi-Density 1RU Patch Panel 24-Port LC-LC DUPLEX (48 FIBERS) |
| RLH-24HDRQLC-01 | Hi-Density 1RU Patch Panel 24-Port LC-LC QUAD (96 FIBERS) |
| RLH-48HDRST-01 | Hi-Density 1RU Patch Panel 48-Port ST-ST SIMPLEX (48 FIBERS) |